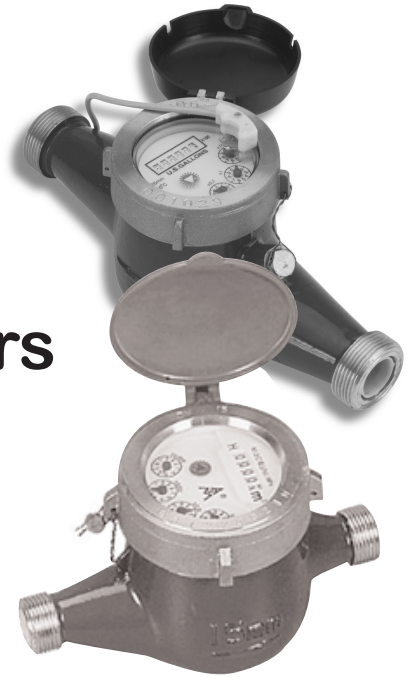


WMP Series Multi-Jet Cold Water Meters

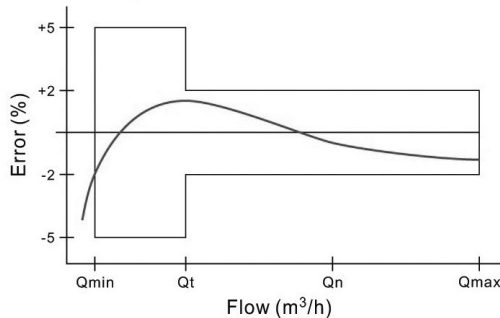
WMP Series water meters use the widely accepted multi-jet principle, as a gear train drives the register totalizer dials. For pulse output meters, a reed switch sensor is attached to the outside of the lens and detects a magnet arm that has replaced one of the dial pointers. The reed switch output is a dry contact closure and does not require power.



Main Technical Data

Nominal diameter		DN	062 - 5/8" x 3/4"	075 - 3/4"	100 - 1"	150 - 1 1/2"	200 - 2"
Maximum flow rate	US gpm	Qmax	13.2	22	30.8	88	132
Nominal flow rate	US gpm	Qn	6.6	11	15.4	44	66
Transition flow rate	US gpm	Qt	0.53	0.88	1.23	3.52	5.3
Minimum flow rate	US gpm	Qmin	0.133	0.22	0.31	0.88	1.32
Minimum reading	US gallon		0.01	0.01	0.01	0.1	0.1
Minimum graduation	US gallon		0.005	0.005	0.005	0.05	0.05

Accuracy Curve



Specifications

Temperature	105° F (40° C) max	
Pressure	150 psi operating	
Materials	Body	Cast bronze
	Internals	Engineered thermoplastic
	Magnet	Alnico
Accuracy	+/- 1.5% of reading	
Sensor	Reed switch	Totalizer only
Maximum Current	20 mA	n/a
Maximum Voltage	24 Vdc or Vac	n/a
Cable Length	12' (4m) std	n/a
	2000' max run	

Model Codes - How to Order

WMP - 075 - 10P →

Size

062 = 5/8" x 3/4"

075 = 3/4"

100 = 1"

150 = 1 1/2"

200 = 2"

Pulse Rate (if applicable)

20P = 20 pulse/gal only in 3/4"

10P = 10 pulse/gal only in 3/4"

4P = 4 pulse/gal

2P = 2 pulse/gal

1P = 1 pulse/gal

5G = 5 gal/pulse

10G = 10 gal/pulse

50G = 50 gal/pulse

100G = 100 gal/pulse

Totalizer only meter would have nothing after the size designation

Examples: WMP-075-10G is a 3/4" meter with a pulse output (reed switch) sensor with a pulse rate of 10 gallons/pulse WMP-100 is a 1" meter with totalizer only